

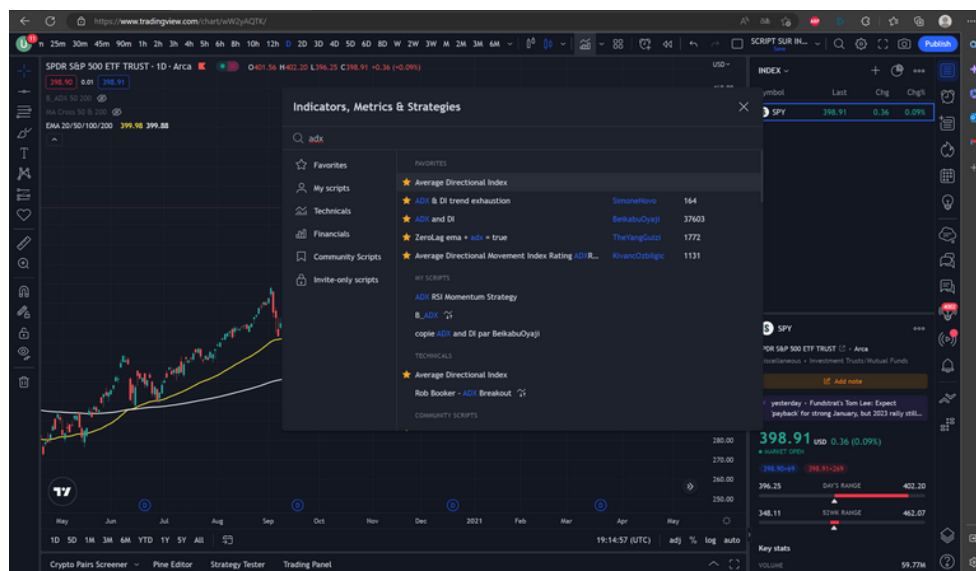


III/ Build A Trend Strategy

To do this we will use these indicators:

- The 50 and 200 moving averages
- An ADX

You will find these indicators in the following way:





Our conditions are as follows:

Open position when:

- The price closes above the 50 period moving average
- Price closes above the 200 period moving average
- The ADX must be above 50, which suggests a strong trend.

Closing a position when:

- Price closes below the 200 period moving average

Let's see what happens!





Let's write some code to automate the strategy!

To do this click on pine editor and copy and paste the code below

```
//@version=5

strategy(title = "B_ADX", overlay = true, process_orders_on_close = true, default_qty_type =
strategy.percent_of_equity, default_qty_value = 100,
commission_type=strategy.commission.percent, commission_value=0.025, currency =
currency.USD)

//ENTRY AND EXIT
days = input(title='days', defval=50)
smap = input(title='ma period', defval=200)
sma_val = ta.sma(close, smap)

[diplup, diminus, adx] = ta.dmi(5, 5)

//STRATEGIE
if close > close[days] and adx > 50 and close > sma_val
    strategy.entry('long', strategy.long)
if close < sma_val
    strategy.close('long')
```